

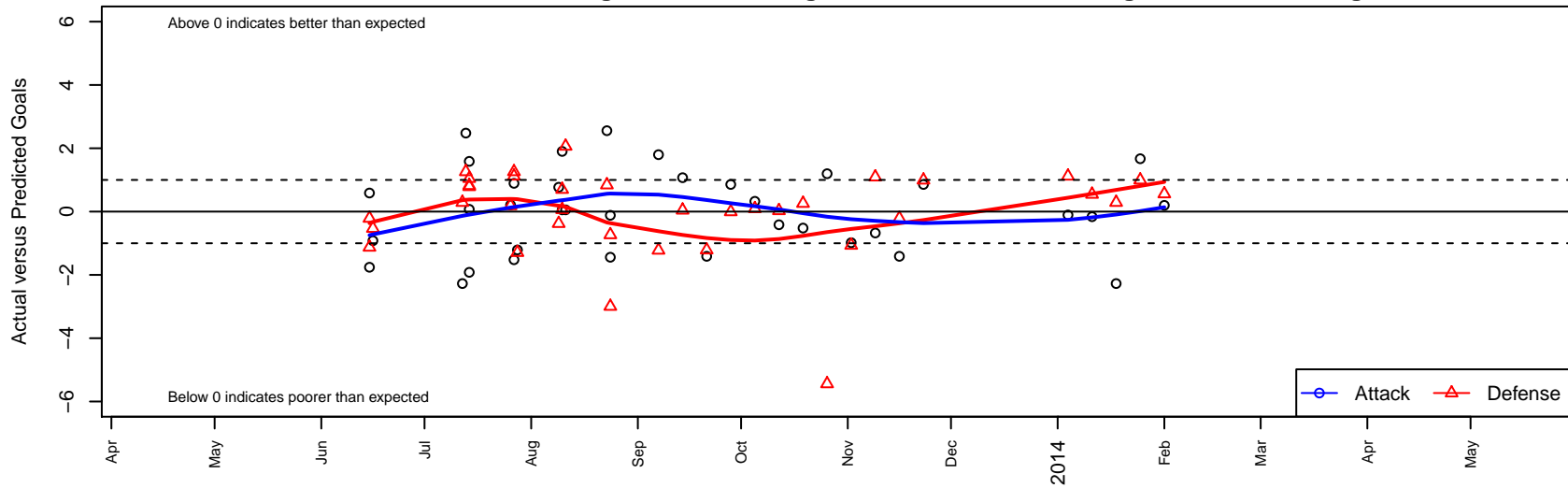
# TUSK United B01

Tukwila Skyway SC  
 Tukwila, WA  
 B01 total strength=800  
 attack=1.27 defense=0.79  
 fall league = NPSL B12D1  
 notes= Vipers FC  
 alt names used:  
 Tusk United  
 10 Tusk United  
 United – B12

Venues played:  
 Starfire Spring Classic BU12  
 Seattle Cup BU12  
 Crossfire Select Cup BU12 Gold  
 River Jam Samba U12  
 Puma Pacific Coast Challenge U12  
 NPSL B12D1  
 Founders Cup B01



**TUSK United B01**  
 Dots are actual minus expected GF (blue circles) and GA (red triangles).  
 Blue line is smoothed change in attack strength. Red is smoothed change in defense strength.



	<b>date</b>	<b>home</b>		<b>away</b>		<b>venue</b>	<b>pred.home</b>	<b>pred.away</b>
21991	2014-02-01	FC Edmonds Riptide B01	1	TUSK United B01	1	Founders Cup B01	1.56	0.80
21711	2014-01-25	TUSK United B01	4	3 Rivers Yakima Borges B01	1	Founders Cup B01	2.33	1.99
21316	2014-01-18	TUSK United B01	5	Seattle United S White B01	0	Founders Cup B01	7.27	0.29
21104	2014-01-11	Crossfire Select Perry B01	0	TUSK United B01	7	Founders Cup B01	0.54	7.16
20896	2014-01-04	Kent United Green B01	0	TUSK United B01	3	Founders Cup B01	1.12	3.11
19079	2013-11-23	TUSK United B01	3	Crossfire Select Taylor B01	0	NPSL B12D1	2.14	0.99
18417	2013-11-16	Seattle United S Black B01	3	TUSK United B01	0	NPSL B12D1	2.79	1.41
17672	2013-11-09	BIFC Blue B01	0	TUSK United B01	1	NPSL B12D1	1.09	1.68
16681	2013-11-02	TUSK United B01	1	BYSC Select Venom B01	2	NPSL B12D1	1.98	0.93
15786	2013-10-26	FC Edmonds Riptide B01	7	TUSK United B01	2	NPSL B12D1	1.56	0.80
14867	2013-10-19	Seattle United W Blue B01	1	TUSK United B01	1	NPSL B12D1	1.26	1.52
13809	2013-10-12	TUSK United B01	2	Mercer Island FC Heat B01	1	NPSL B12D1	2.42	1.03
12788	2013-10-05	TUSK United B01	2	BIFC Blue B01	1	NPSL B12D1	1.68	1.09
11844	2013-09-28	Crossfire Select Taylor B01	1	TUSK United B01	3	NPSL B12D1	0.99	2.14
10898	2013-09-21	TUSK United B01	0	Seattle United S Black B01	4	NPSL B12D1	1.41	2.79
9922	2013-09-14	Crossfire Select Nakamura B01	1	TUSK United B01	4	NPSL B12D1	1.04	2.93
8978	2013-09-07	TUSK United B01	3	Seattle United S Blue B01	3	NPSL B12D1	1.20	1.78
7964	2013-08-24	TUSK United B01	1	Snohomish United Red B01	4	Puma Pacific Coast Challenge U12	2.44	1.00
7966	2013-08-24	Tynecastle FC B01	4	TUSK United B01	1	Puma Pacific Coast Challenge U12	3.27	1.12
7660	2013-08-23	Eastside FC Grey B01	0	TUSK United B01	5	Puma Pacific Coast Challenge U12	0.84	2.44
6480	2013-08-11	TUSK United B01	2	Tacoma United San Martin B01	0	River Jam Samba U12	1.94	2.06
6152	2013-08-10	TUSK United B01	9	WPFC Fury Black B01	0	River Jam Samba U12	7.10	0.70
6153	2013-08-10	Tacoma United San Martin B01	2	TUSK United B01	2	River Jam Samba U12	2.06	1.94
5897	2013-08-09	TUSK United B01	6	NWN Blue B01	1	River Jam Samba U12	5.23	0.62
4967	2013-07-28	TUSK United B01	5	Mercer Island FC Cascade B01	2	Crossfire Select Cup BU12 Gold	6.21	0.71
4666	2013-07-27	TUSK United B01	0	Seattle United W Blue B01	0	Crossfire Select Cup BU12 Gold	1.52	1.26
4674	2013-07-27	Kent United Green B01	0	TUSK United B01	4	Crossfire Select Cup BU12 Gold	1.12	3.11
4501	2013-07-26	Seattle United NE Blue B01	1	TUSK United B01	2	Crossfire Select Cup BU12 Gold	1.18	1.79

	<b>date</b>	<b>home</b>		<b>away</b>		<b>venue</b>	<b>pred.home</b>	<b>pred.away</b>
3187	2013-07-14	Crossfire Select Nakamura B01	0	TUSK United B01	3	Seattle Cup BU12	1.04	2.93
3190	2013-07-14	TUSK United B01	2	SCORE Eagles Red B01	0	Seattle Cup BU12	3.92	0.82
3192	2013-07-14	TUSK United B01	3	Seattle United S Black B01	2	Seattle Cup BU12	1.41	2.79
2941	2013-07-13	TUSK United B01	4	Seattle United W Blue B01	0	Seattle Cup BU12	1.52	1.26
2746	2013-07-12	TUSK United B01	5	Seattle United S White B01	0	Seattle Cup BU12	7.27	0.29
1363	2013-06-16	Pumas Unknown B01	1	TUSK United B01	3	Starfire Spring Classic BU12	0.47	3.92
1126	2013-06-15	TUSK United B01	2	Seattle United S Black B01	3	Starfire Spring Classic BU12	1.41	2.79
1133	2013-06-15	ISC Gunners B B01	2	TUSK United B01	1	Starfire Spring Classic BU12	0.87	2.76